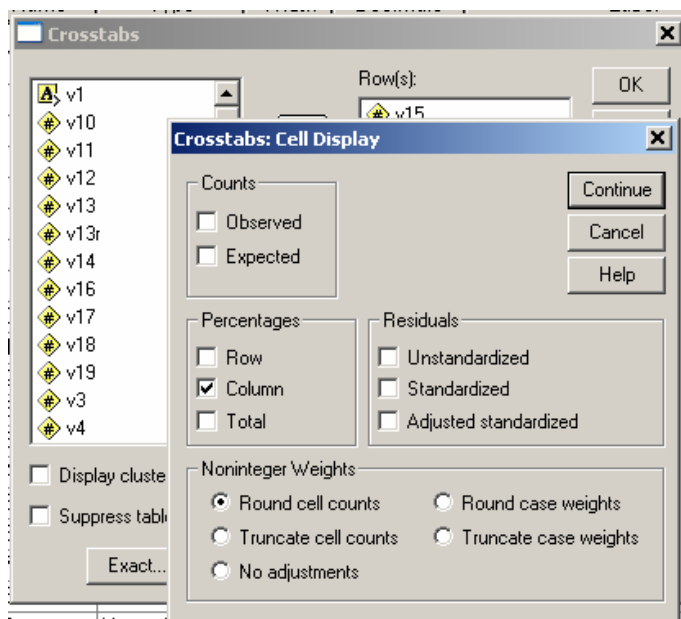


Civil Rights Categories * Political Party Identification Crosstabulation

		Political Party Identification			
			Democrat	Republican	Total
Civil Rights Categories	0-25 Conservative	Count	7	1	8
		% within Political Party Identification	46.7%	10.0%	32.0%
	25-50 Conservative	Count	1	1	2
		% within Political Party Identification	6.7%	10.0%	8.0%
	50-75 Conservative	Count	4	4	8
		% within Political Party Identification	26.7%	40.0%	32.0%
	75-100 Conservative	Count	3	4	7
		% within Political Party Identification	20.0%	40.0%	28.0%
Total		Count	15	10	25
		% within Political Party Identification	100.0%	100.0%	100.0%

A cleaner table needs the title adjusted, the cell frequencies removed (include the column frequencies), and removal of some of the SPSS labeling.

The first step is to rerun the table in SPSS removing the cell frequencies. When you do the crosstabs command select **Cells** and **UNCHECK** the Observed in the Counts box.




The following table was then produced:

**Civil Rights Categories ^ Political Party Identification
Crosstabulation**

% within Political Party Identification

		Political Party Identification		
		Democrat	Republican	Total
Civil Rights Categories	0-25 Conservative	46.7%	10.0%	32.0%
	25-50 Conservative	6.7%	10.0%	8.0%
	50-75 Conservative	26.7%	40.0%	32.0%
	75-100 Conservative	20.0%	40.0%	28.0%
Total		100.0%	100.0%	100.0%

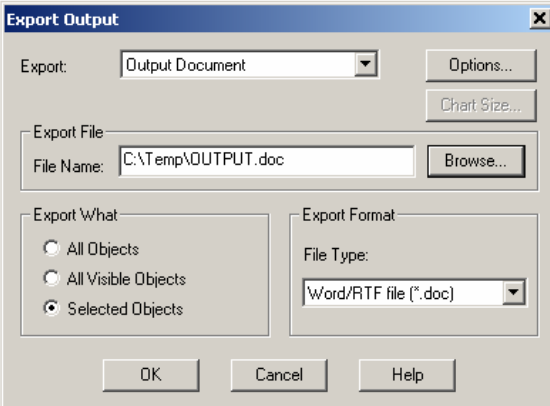
I exported the table from SPSS as a WORD/rtf file



**Civil Rights Categories ^ Political Party Identification
Crosstabulation**

% within Political Party Identification

		Political Party Identification		
		Democrat	Republican	Total
Civil Rights Categories	0-25 Conservative	46.7%	10.0%	32.0%
	25-50 Conservative	6.7%	10.0%	8.0%
	50-75 Conservative	26.7%	40.0%	32.0%
	75-100 Conservative	20.0%	40.0%	28.0%
Total		100.0%	100.0%	100.0%



I then used WORD to edit the file changing the title and adding the column marginal frequencies.

In WORD the table looks like

Table 1 Crosstabulation of Civil Rights Categories and Political Party Identification ¶

		Political Party Identification		Total
		Democrat	Republican	
Civil Rights Categories	0-25 Conservative	46.7%	10.0%	32.0%
	25-50 Conservative	6.7%	10.0%	8.0%
	50-75 Conservative	26.7%	40.0%	32.0%
	75-100 Conservative	20.0%	40.0%	28.0%
Total		100.0% (15)	100.0% (10)	100.0% (25)

But it prints like this ---

Table 1 Crosstabulation of Civil Rights Categories and Political Party Identification

		Political Party Identification		
		Democrat	Republican	Total
Civil Rights Categories	0-25 Conservative	46.7%	10.0%	32.0%
	25-50 Conservative	6.7%	10.0%	8.0%
	50-75 Conservative	26.7%	40.0%	32.0%
	75-100 Conservative	20.0%	40.0%	28.0%
Total		100.0% (15)	100.0% (10)	100.0% (25)

Normally I would put the row label (Civil Rights Categories) at the top and not on the side, but this is ok.

SPSS does have a nice tables command for producing finished products, but I discovered the university license has expired and I cannot use that function today.